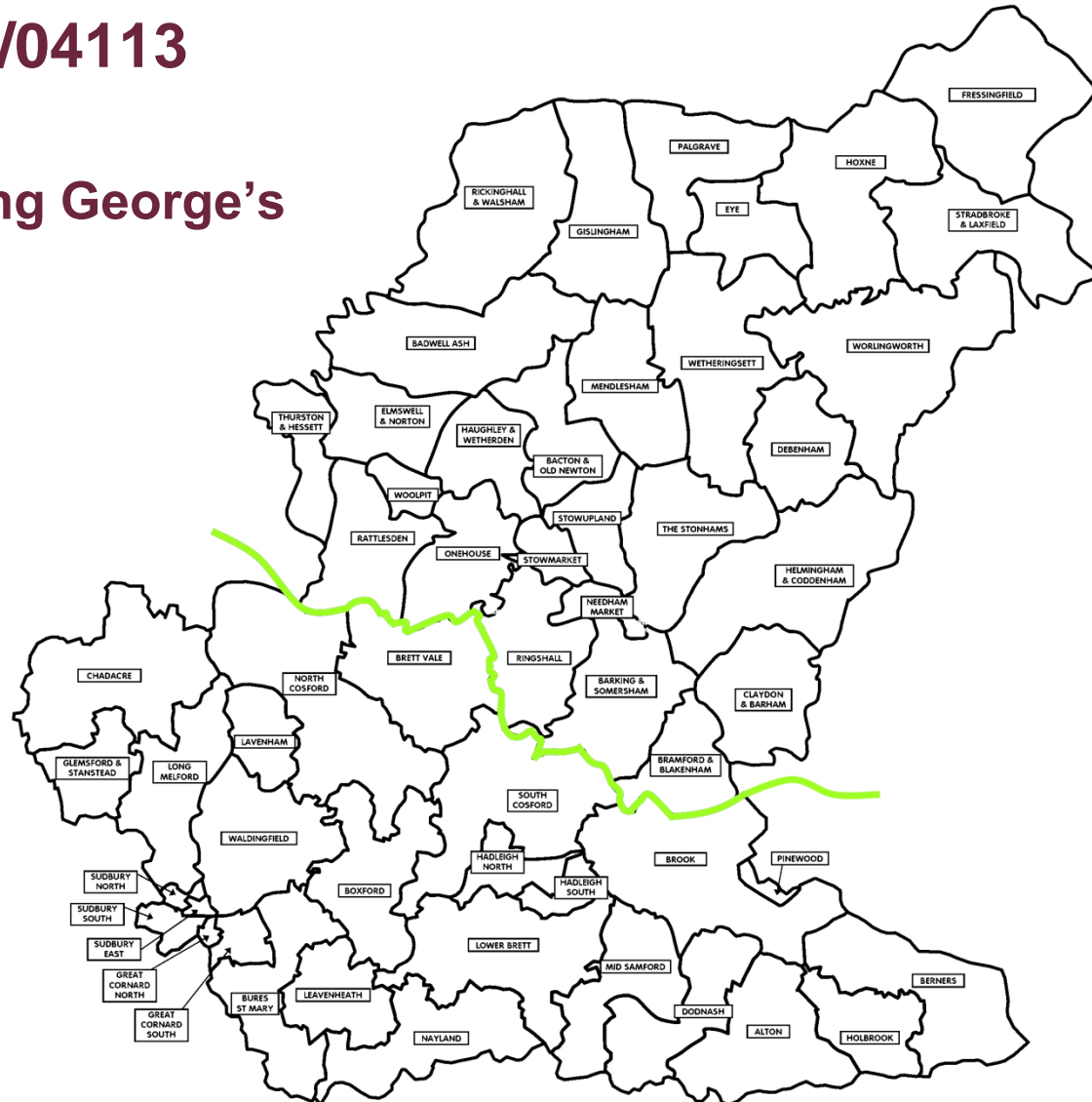


**Application No: DC/17/04113**

**Address: Land East of King George's  
Field  
Green Road  
Haughley  
IP14 3RA**

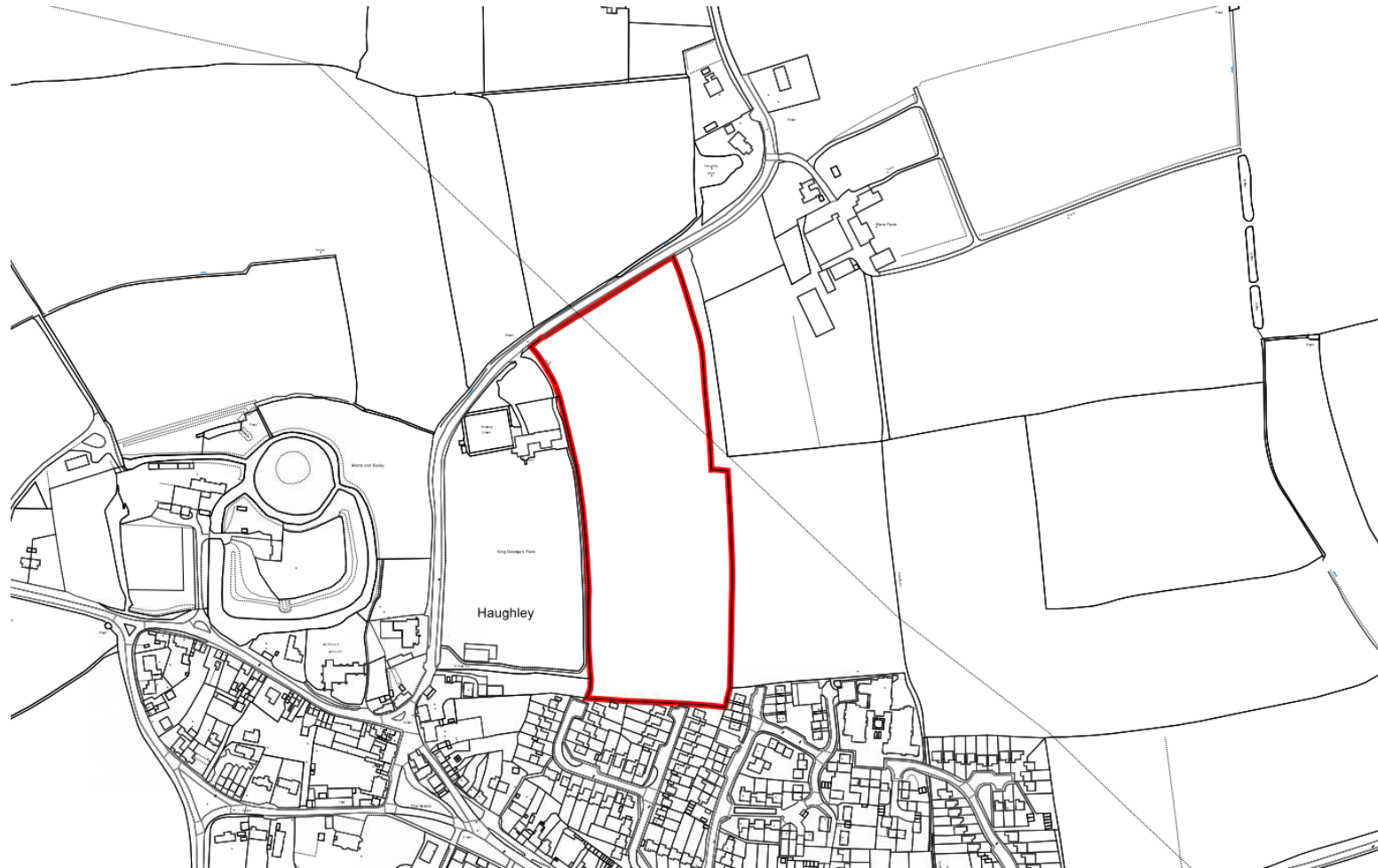




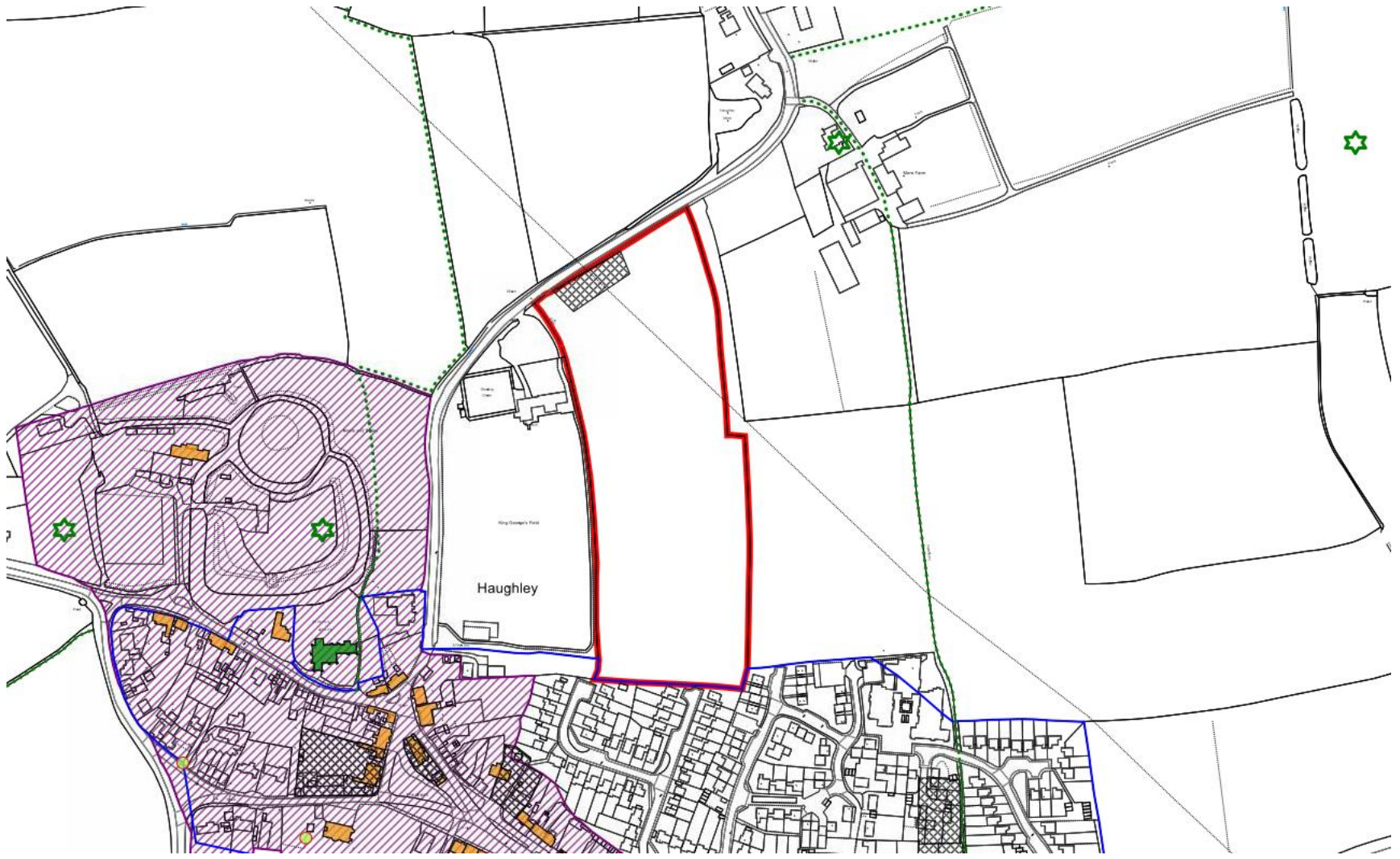
## Verbal Updates:

- Confirmation and summary of any 3<sup>rd</sup> Party representations received not previously issued to members.
- Confirmation and summary of any consultee responses received not previously issued to members
- Confirmation of any changes to recommendation, conditions or reasons.

# Site Location Plan



# Constraints Map





## Aerial Map

Slide 5









# Proximity to Scheduled Ancient Monument



A Looking south along existing footpath on eastern side of King George's Field towards equipped play area boundary to proposed development site to the left



B View due west from public footpath (on eastern side of King George's Field) with Cedar on the summit of the mothe indicated with an arrow. Existing tall trees on western boundary of King George's Field clearly visible



C Looking north along existing footpath towards Ron Cradock Pavilion boundary to proposed development site to the right



D Looking east across King George's Playing Field towards boundary of proposed development site



E Looking north along Green Road